

Os melhores instrumentos nas mãos
dos melhores profissionais.

Cirurgia Hospitalar



Cabeça & Pescoço

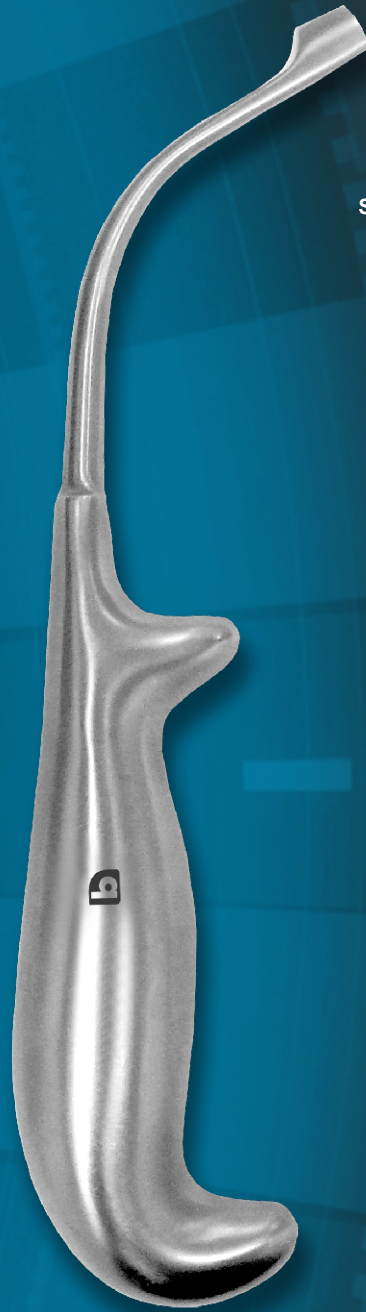
Cranio-Maxillo-Facial

quinelato
instrumentos cirúrgicos



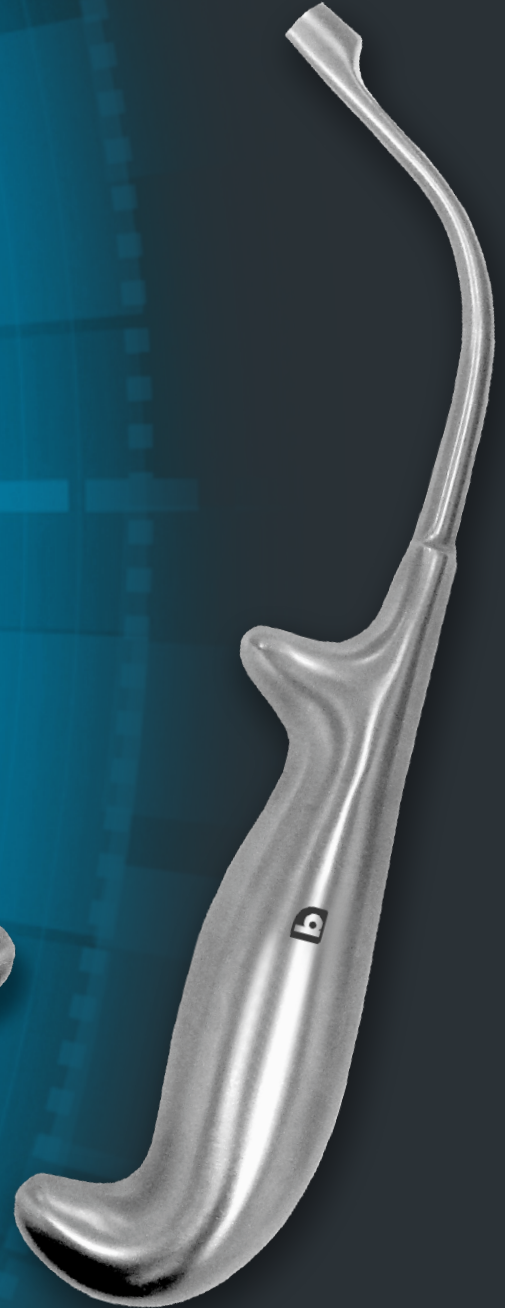
Cabeça & Pescoço

Cranio-Maxillo-Facial



ESQUERDO
QD.936.01

**SEPARADOR
SAGITAL**



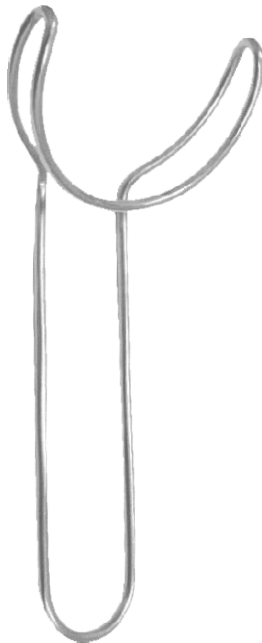
DIREITO
QD.936.02



BRUENINGS
QX.385.19



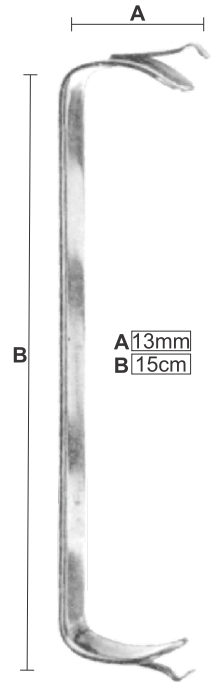
WIEDER
QD.195.00



BRANEMARK
QD.105.50



MEAD
QD.160.10



FARABEUF MODIFICADO
QG.660.15

A 13mm
B 15cm



ESQUERDO
QD.188.03



DIREITO
QD.188.02

BAUER



LAVASSIER
QD.188.01



ÓRBITA
QD.696.00

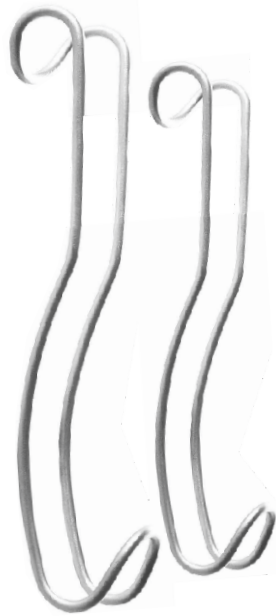


AFASTADORES LABIAIS & DE MANDÍBULA

Cabeça & Pescoço



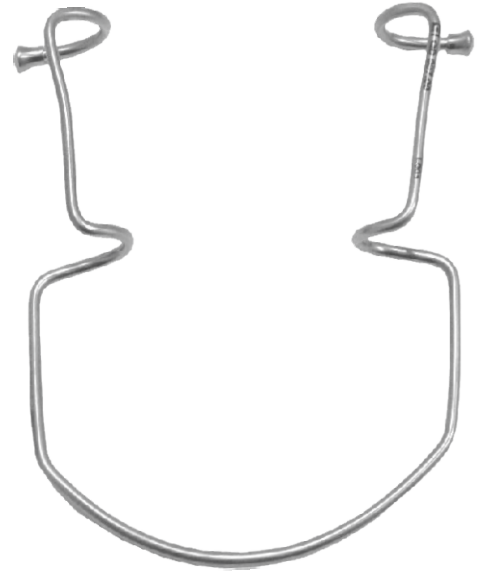
DENHARDT
QD.114.12



STERNBERG (par)
QD.105.00



SHUMAN
QD.938.00



ORINGER
QD.937.00



MINNESOTA
QD.150.14



**MINNESOTA
C/ ASPIRADOR**
QD.152.14



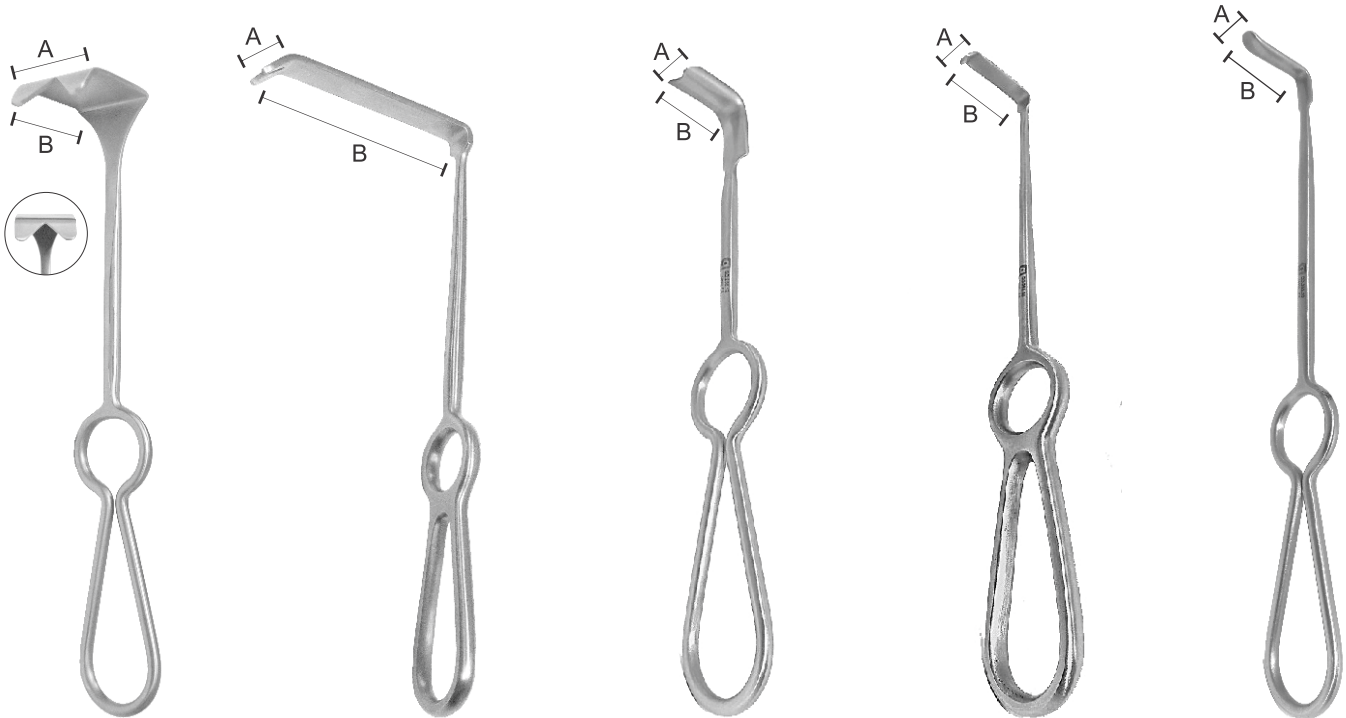
**MINNESOTA
CAWOOD**
QD.153.00



SVERZUT
QD.153.10



HARGIS
QD.639.00



OBWEGESER
Medidas (mm)

Código	A	B
QD.251.40	40	30

OBWEGESER P/ RAMO
Medidas (mm)

Código	A	B
QD.251.65	11	65
QD.251.80	11	80

OBWEGESER P/ RAMO
Medidas (mm)

Código	A	B
QD.256.12	12	30

OBWEGESER P/ BAIXO
Medidas (mm)

Código	A	B
QD.252.00	7	30
QD.252.42	11	42
QD.252.62	11	62

OBWEGESER P/ CIMA
Medidas (mm)

Código	A	B
QD.253.00	7	30
QD.253.42	11	42
QD.253.62	11	62



OBWEGESER P/ MENTO
QD.250.17

OBWEGESER P/ PROGENISMO
QD.250.18

OBWEGESER P/ PROGENISMO MODIFICADO
QD.254.00

AFASTADORES ANTERIOR E POSTERIOR

Código	Ponta
QG.095.10	10mm
QG.095.17	17mm
QG.095.20	20mm
QG.095.22	22mm

MINI LANGENBECK
13,5 cm



CINZÉIS, GOIVAS & OSTEÓTOMOS

Cabeça & Pescoço



WAGNER



WAGNER ROBUSTO
15 cm | Ponta: 8mm
QD.120.04



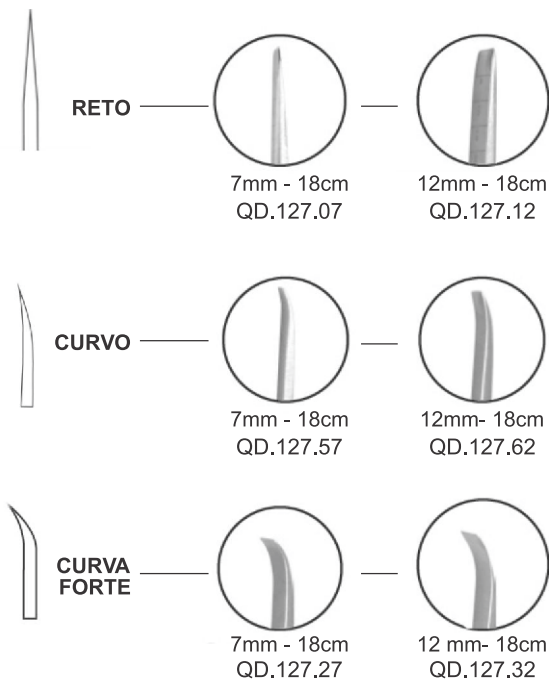
WAGNER P/ SEPTO NASAL
(PONTA OLIVA)
QD.122.18



GARDNER



DESJUNÇÃO PALATINA
SVERZUT
QD.197.00



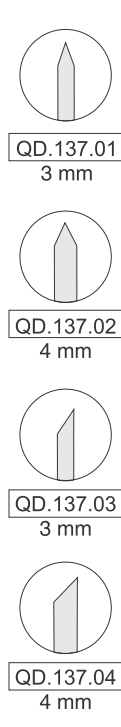
MARCA
PROFUNDIDADE



ALEXANDER



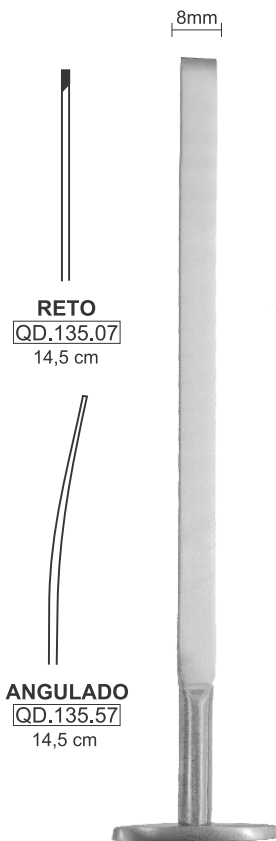
ALEXANDER



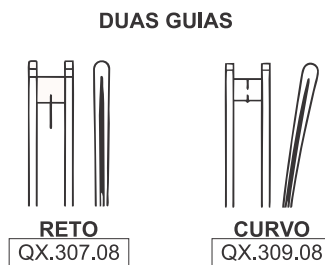
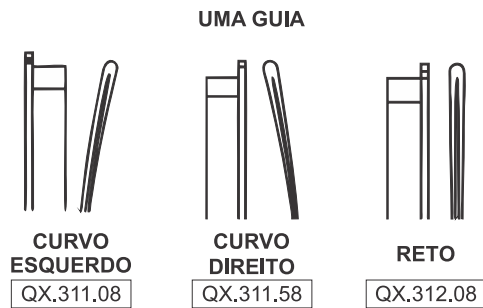
LUCAS
16 cm



LUCAS
16 cm



COM STOP



COM GUIA
Delicado



ELEVADORES & DESCOLADORES

Cabeça & Pescoço



EM J
QD.194.20



**RAMO
SVERZUT**
QD.190.20



**MOLT
+ RAMO**
QD.680.00



**ELEVADOR
SELDIN N° 23**
QD.313.23



HENAHAN
QD.191.18



**CURETA
DE MOLT**
(DESCOLADOR 2|4)
QD.934.15



**MOLT +
DISSECTOR**
QD.935.03



*20%
menor
que o
padrão

**MOLT
DELICADO**
QD.935.09



**DESCOLADOR
DE MOLT 18**
QD.935.18

PEQUENO
QD.935.20
GRANDE
QD.935.22



**MOLT
C/ CABO**



WILLIGER
16 cm
QO.960.00



FREER
QX.546.18



**CONDENSADOR
LA BANCA**
QD.921.00



DE PALATO
QX.545.18



**DUPLO | RETO
BUSER**
QD.935.02



**DE PERIOSTEO
24G**
QD.123.24



PRICHARD Nº 3
QD.921.03



ROWE
Direito: QD.242.24
Esquerdo: QD.243.24



PINÇA WALSHAN
Direita: QD.316.21
Esquerda: QD.317.21



SEPARADOR DE CAVIDADE (PINÇA SMITH)
QD.260.20



ALLIS MODIFICADA
QL.134.00



GILLIES
16 cm
QD.650.16



QUINELATO PARA ENXERTO



Perfurada (1 furo)
QO.801.16



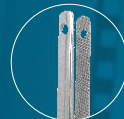
Fenestrada
QO.801.17



Fenestrada / Perfurada (3 Furos)
QO.801.18



ARNHOLD



RETA
QD.690.20



CURVA
QD.691.20

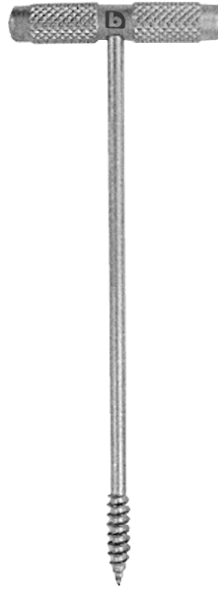


KOCHER ANGULADA 90°
Ponta ativa: 14 cm
19 cm | QD.675.00

* Acompanha Corrente



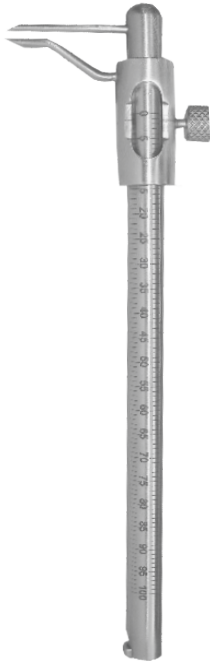
GANCHO BARROS
QD.248.15



PARAFUSO BYRD
QD.980.00
(p/ tração)



RASPA
MÉDIA | QD.660.02
GRANDE | QD.660.03



PAQUÍMETRO TIPO AGULHA
QD.670.00



PAQUÍMETRO TIPO RÉGUA
QD.671.00



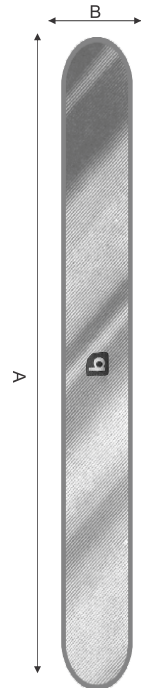
COMPASSO CASTROVIEJO
QD.308.30



**AGULHA
OBWEGESER**
QD.247.15

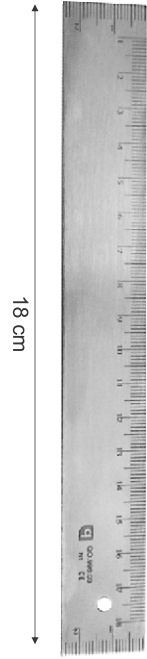


**AGULHA
OBWEGESER**
QD.247.23



**ESPÁTULA
FLEXÍVEL**

CÓDIGO	A	B
QD.196.01	20	6,5
QD.196.02	20	16
QD.196.10	20	10



**RÉGUA
MILIMETRADA**
QO.996.03
18 cm



RETA

11 cm	QZ.772.11
14 cm	QZ.772.14



CURVA

11 cm	QZ.771.11
14 cm	QZ.771.14



**TESOURA
CASTROVIEJO**



RETA

11 cm	QT.568.11
13 cm	QT.568.13

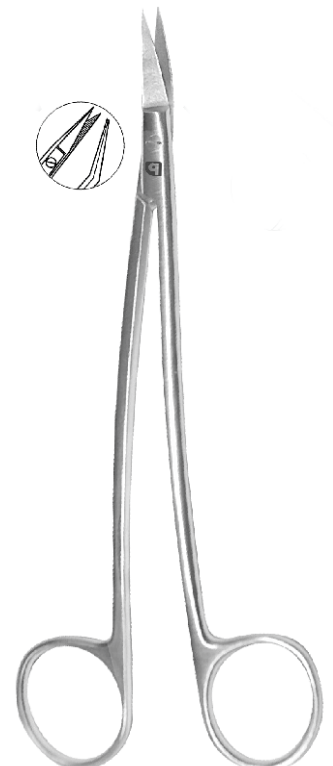


CURVA

11 cm	QT.567.11
13 cm	QT.567.13



**TESOURA
GOLDMANN FOX**



TESOURA DEAN
QT.497.17
(com serrilha)



quinelato

instrumentos cirúrgicos